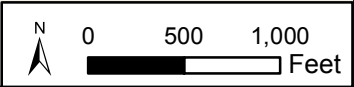
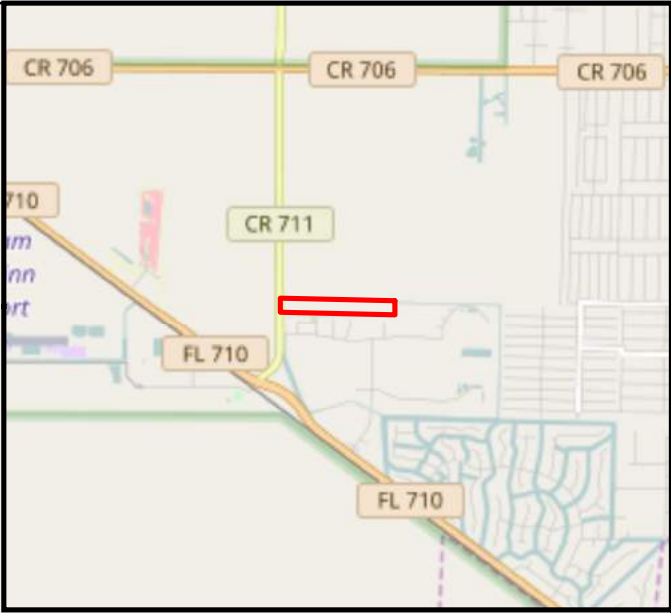
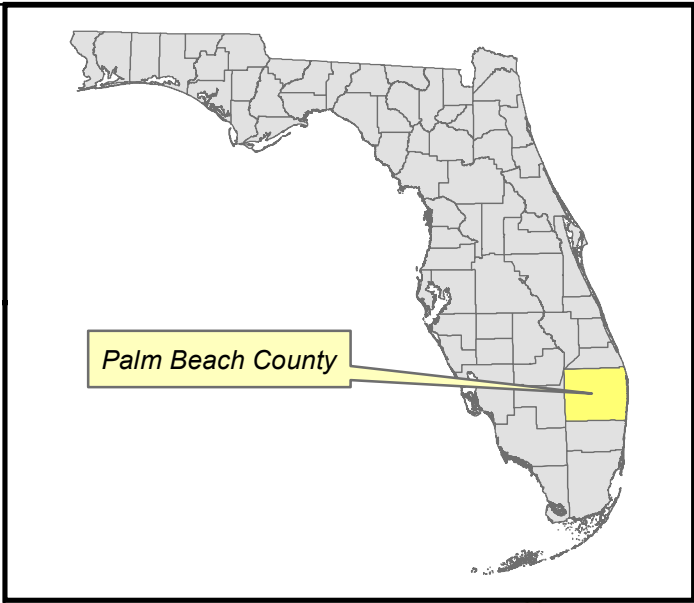


K:\BCD_ENV\140346000 - Palm Beach Park of Commerce\ENV\GIS\MXD\FB Park Location Map.mxd



Kimley»Horn

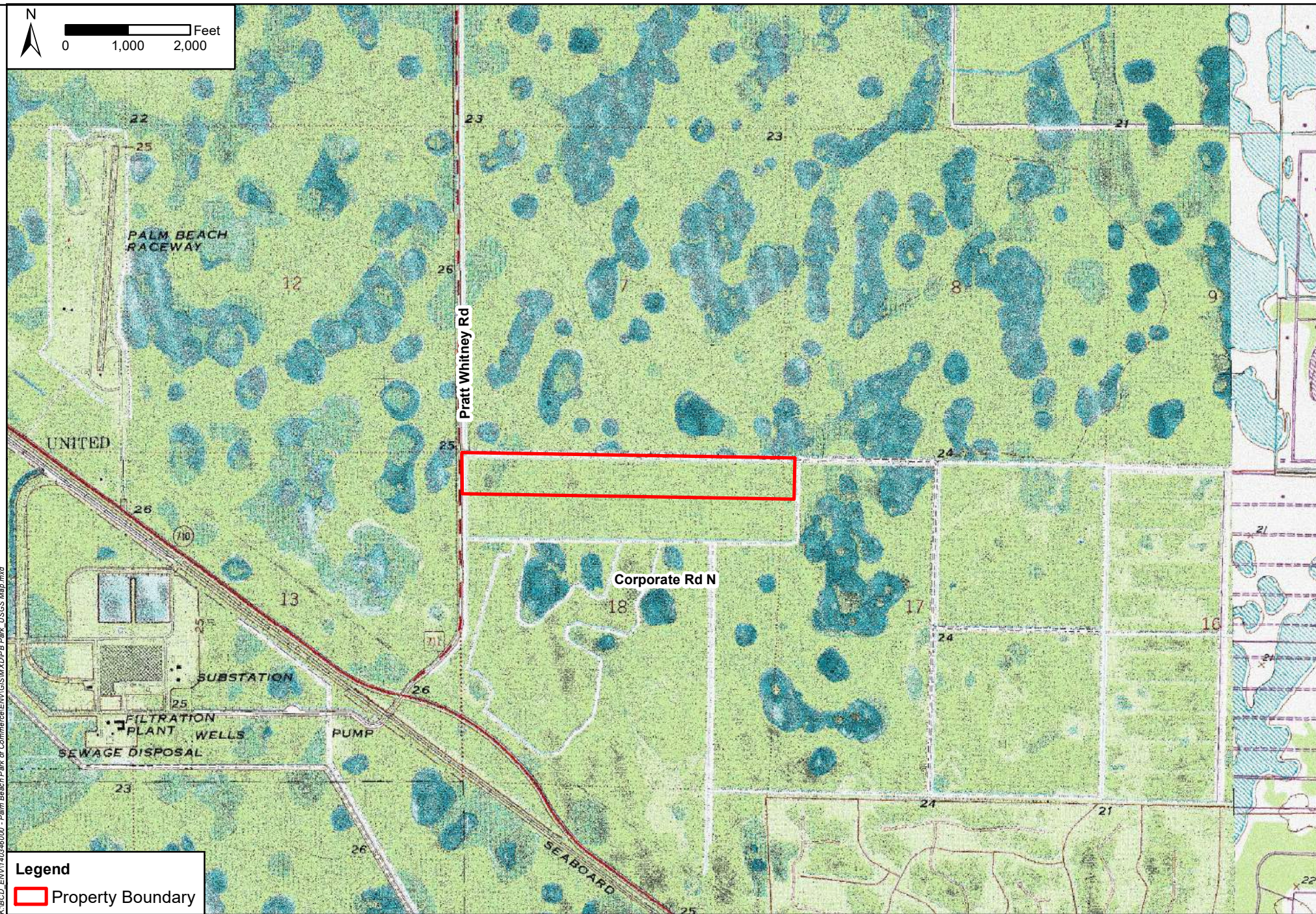
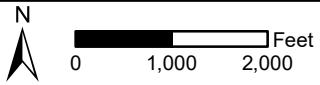
© 2017 Kimley-Horn and Associates, Inc.
1615 S Congress Ave., #201, Delray Beach, FL
Phone (561) 330-2345
www.kimley-horn.com

Project Location Map
Surf Ranch Florida
Palm Beach County, Florida

1 in = 1,000 ft

FEBRUARY 2017

FIGURE 1



Legend
 Property Boundary

Source: 2015 Aerials courtesy of FDOT APLUS Photography

USGS Topographic Quadrangle Map (7.5-Min West of Road)

**Surf Ranch Florida
 Palm Beach County, Florida**

Kimley & Horn

© 2017 Kimley-Horn and Associates, Inc.
 1615 S Congress Ave. #201, Delray Beach, FL, 33445
 Phone (561) 330-2345
 www.kimley-horn.com

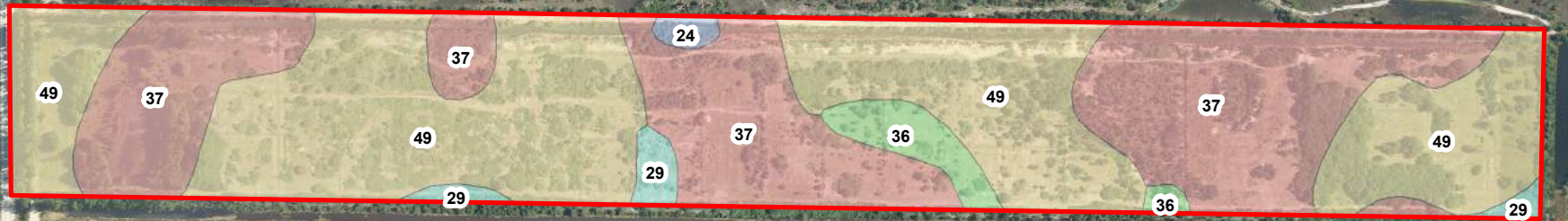
1 inch = 2,000 feet

FEBRUARY 2017

JOB NUMBER: 140346000

FIGURE 2

K:\BIDD_ENV\140346000 - Palm Beach Park of Commerce\ENV\GIS\MXD\018 Park_USGS Map.mxd



Pratt Whitney Rd

Corporate Rd N

Legend

Property Boundary

Soil Type

- 24: Okeelanta muck (hydric)
- 29: Pineda fine sand (hydric)
- 36: Riviera fine sand (hydric)
- 37: Riviera fine sand, depressional (hydric)
- 49: Wabasso fine sand

Source: 2015 Aerials courtesy of FDOT APLUS Photography; Soils data courtesy of NRCS

Kimley»Horn
 © 2017 Kimley-Horn and Associates, Inc.
 1615 S Congress Ave. #201, Delray Beach, FL, 33445
 Phone (561) 330-2345
 www.kimley-horn.com

NRCS Soils Data Map
Surf Ranch Florida
Palm Beach County, Florida

1 inch = 600 feet

FEBRUARY 2017

JOB NUMBER: 140346000

FIGURE 6

K:\BGGD_ENV\140346000 - Palm Beach Park of Commerce\ENV\GIS\MXD\PB Park_Soils_Map.mxd



Pratt Whitney Rd

Corporate Rd N

Legend

- Property Boundary
- USACE Data Points
- Delineated Wetlands (Fill (±11.67 acres))

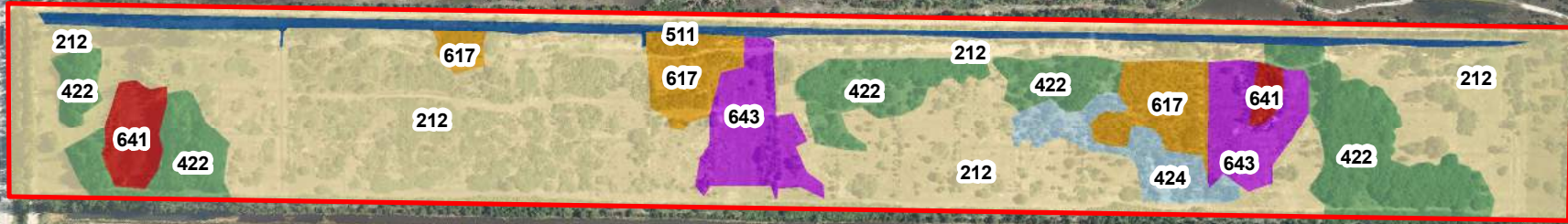
Source: 2015 Aerials courtesy of FDOT APLUS Photography

Kimley»Horn

© 2017 Kimley-Horn and Associates, Inc.
 1615 S Congress Ave. #201, Delray Beach, FL, 33445
 Phone (561) 330-2345
 www.kimley-horn.com

Delineated Wetlands Map
Surf Ranch Florida
Palm Beach County, Florida

K:\BEGD_ENV\140172001 - Kitterman road\GIS\MXD\B Park_Delineated Wetland_Map.mxd



Pratt Whitney Rd

Corporate Rd N

| Legend | |
|--------|--|
| | Property Boundary |
| | 511: Agricultural Ditch (±3.6 acres) |
| | 212: Unimproved Pastures (±51.3 acres) |
| | 422: Brazilian Pepper (±11.8 acres) |
| | 424: Melaleuca (±2.4 acres) |
| | 617: Exotic Wetland Hardwoods (±4.6 acres) |
| | 641: Freshwater Marshes (±1.9 acres) |
| | 643: Wet Prairies (±5.4 acres) |

Source: 2015 Aerials courtesy of FDOT APLUS Photography; Soils data courtesy of NRCS

Kimley Horn
 © 2017 Kimley-Horn and Associates, Inc.
 1615 S Congress Ave. #201, Delray Beach, FL, 33445
 Phone (561) 330-2345
 www.kimley-horn.com

Florida Land Use, Cover, Forms and Classification Systems Map
Surf Ranch Florida
Palm Beach County, Florida

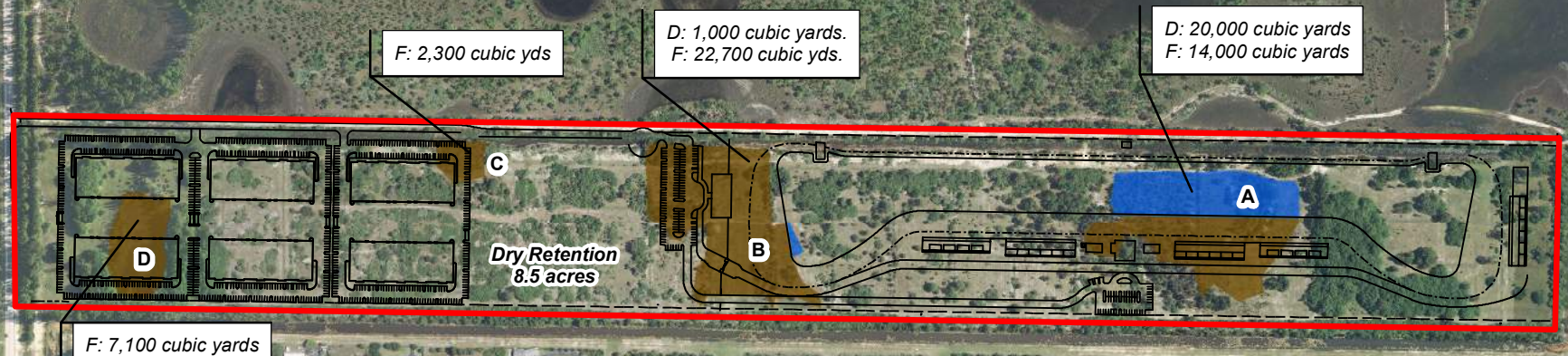
1 inch = 600 feet

FEBRUARY 2017

JOB NUMBER: 140346000

FIGURE 7

K:\BEGD_ENV\140346000 - Palm Beach Park of Commerce\ENV\GIS\MXD\PB Park_FLUCFCS_Map.mxd



Pratt Whitney Rd

Corporate Rd N

Legend

Property Boundary

Type

Dredge (±2.16 acres; 21,000 cubic yards)

Fill (±9.52 acres; 46,100 cubic yards)

Source: 2015 Aerials courtesy of FDOT APLUS Photography

Kimley»Horn

© 2017 Kimley-Horn and Associates, Inc.
1615 S Congress Ave. #201, Delray Beach, FL, 33445
Phone (561) 330-2345
www.kimley-horn.com

Wetland Impacts Map
Surf Ranch Florida
Palm Beach County, Florida

1 inch = 600 feet

FEBRUARY 2017

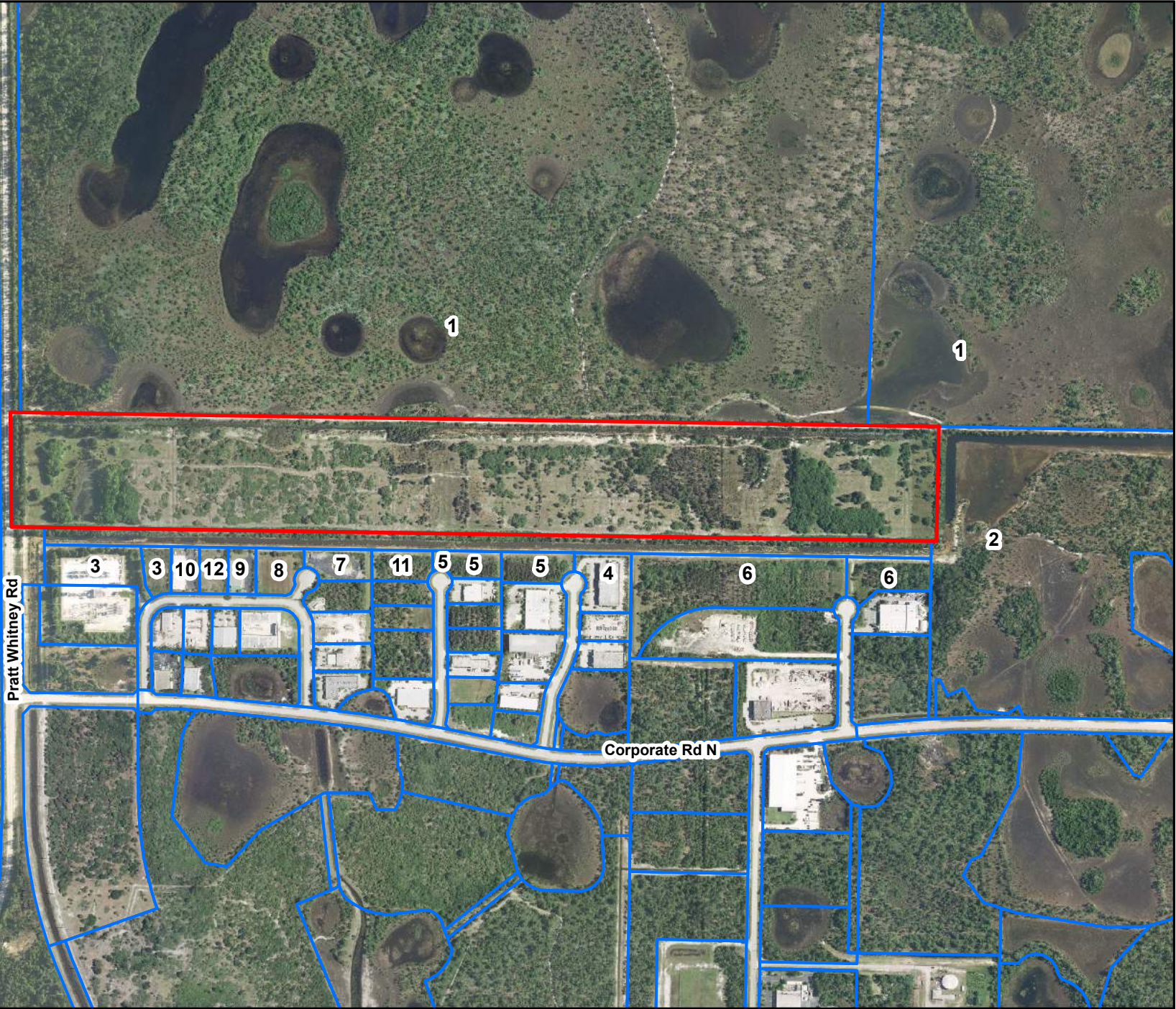
JOB NUMBER: 140346000

Figure 8

K:\B\CD_ENV\140346000 - Palm Beach Park of Commerce\ENV\GIS\MXD\IPB Park_Weiland_Impacts.mxd



K:\B\CD_ENV\140346000 - Palm Beach Park of Commerce\ENV\GIS\MXD\PB Park_Adjacent Owners Map.mxd



Legend

- Property Boundary
- Parcels

Source: 2015 Aerials courtesy of FDOT APLUS Photography; Soils data courtesy of NRCS

Kimley»Horn

© 2016 Kimley-Horn and Associates, Inc.
 1615 S Congress Ave, #201, Delray Beach, FL, 33445
 Phone (561) 330-2345
 www.kimley-horn.com

Adjacent Property Owners
Surf Ranch Park
Palm Beach County, Florida